



SCIFLOC™
THE ULTIMATE FLOCCULANT.

www.scisan.co.uk



Introducing SCIFLOC™

Your Ultimate Water Treatment Solution

At Scientific Sanitation Solutions, we are unwavering in our mission to elevate the standards of water treatment. **SCIFLOC™**, a powerful flocculant meticulously crafted for industrial, municipal, and agricultural applications, is designed to fulfil the unique demands of these sectors.

Our commitment to providing top-tier water treatment solutions is driven by the imperative to ensure the health and well-being of communities and environments alike. With **SCIFLOC™**, we aim to make a significant impact on the purification and safety of water resources around the globe.

Discover the power of **SCIFLOC™**.

Advanced Water Treatment

Purification and Impurity Removal

Water is essential for life, and it's equally critical to ensure that the water we use is clean and safe. SCIFLOC™ is a versatile water treatment solution that excels in two key areas:

Purification is at the core of SCIFLOC™ 's capabilities, allowing it to excel in the removal of impurities, sediments, and pollutants from various water sources. When it comes to water treatment, achieving purity is of utmost importance. SCIFLOC™ employs a unique and highly efficient process that targets and eliminates a wide range of contaminants. Whether it's suspended particles, dissolved solids, debris, or organic impurities, our flocculant is designed to address them all. This comprehensive approach will assist the purification process of the water, which may provide under suitable conditions, pure, clear water free from any unwanted elements. By delivering water that is devoid of contaminants, SCIFLOC™ plays a crucial role in safeguarding the health and well-being of communities, industries, and ecosystems alike.



Impurity removal stands as one of **SCIFLOC™**'s distinctive and exceptional capabilities, setting it apart as a versatile water treatment solution. **SCIFLOC™** has been engineered with the precision required to effectively target specific impurities in water, offering a tailored approach to meet the precise needs of your application. **SCIFLOC™** has the capability to selectively reduce and, in some cases, eliminate a range of contaminants in your water sources, such as [heavy metals](#), [organic matter](#), [phosphates](#), [tannins](#), [colorants](#), [COD](#), and [ammonia](#). This remarkable ability to customise impurity removal ensures that the treated water aligns perfectly with the requirements of your industry, municipality, or agricultural operation. With **SCIFLOC™**, you have a partner that not only purifies water but does so with the precision and flexibility needed to suit a wide range of applications, promoting health, safety, and efficiency in every drop.

Key Features



SCIFLOC™ uses an advanced and innovative formula that sets it apart from traditional water treatment products. This ensures superior performance and effectiveness in treating various water sources.



SCIFLOC™ is highly efficient at clarifying water by reducing and removing impurities, sediments, and contaminants, resulting in crystal-clear and safe water that meets high-quality standards.



SCIFLOC™ is versatile and suitable for a wide range of applications, including industrial, agricultural, and municipal water treatment, making it adaptable to various needs and industries.



SCIFLOC™ excels at targeting and removing a wide range of contaminants, including heavy metals, organic matter, phosphates, and more. This ensures that water treated with **SCIFLOC™** is clean, safe, and free from various pollutants.



SCIFLOC™ is environmentally responsible and designed to minimise its impact on ecosystems. It readily biodegrades and does not bioaccumulate, contributing to a sustainable and eco-conscious approach to water treatment.



SCIFLOC™ can effectively treat water with varying pH levels (from 3-10), from acidic to alkaline, without compromising its performance.

Environmental Responsibility

Our Pledge to Sustainability

At Scientific Sanitation Solutions, we recognise that our responsibility extends beyond water treatment. Here's how we contribute to a sustainable future:

- **Readily Biodegradable:** SCIFLOC™ is designed for eco-conscious consumers. When exposed to large bodies of water, it readily biodegrades, leaving behind minimal environmental impact.
- **Non-Bioaccumulative:** Our product does not bioaccumulate in ecosystems, ensuring that it remains in harmony with nature.
- **Regulatory Compliance:** We adhere to stringent environmental regulations, demonstrating our commitment to preserving the planet.

“SCIFLOC™ is not just about clean water; it's about a clean and sustainable future.”



Beyond Water Treatment with SCIFLOC™.

Comprehensive Contaminate Removal



Heavy Metals

SCIFLOC™ effectively removes various heavy metals from water sources, including lead, cadmium, chromium, mercury, copper, zinc, nickel, arsenic, and aluminium.



Organic Matter

SCIFLOC™ excels in reducing a wide range of organic contaminants from water, including organic compounds, hydrocarbons, pesticides, herbicides, VOCs, NOM, algal toxins, and microbial byproducts.



Phosphates

SCIFLOC™ effectively targets and eliminates various phosphate contaminants present in water sources. These include orthophosphates, polyphosphates, and organic phosphates, among others.



Tannins

SCIFLOC™ effectively removes tannins and various other organic contaminants from water, ensuring improved water quality.



COD

SCIFLOC™ efficiently reduces COD levels and eliminates various organic contaminants from water, enhancing overall water quality.



Ammonia

SCIFLOC™ effectively mitigates ammonia levels and removes ammonia contaminants from water, enhancing water quality and environmental safety.

Versatile Use

Tailored to Your Specific Needs

SCIFLOC™ is not a one-size-fits-all solution; it's a versatile tool that can be customised to meet your specific requirements:

● **Industrial Processes:** Our product is designed to cater to the demands of industrial processes, ensuring that water used in manufacturing and production is of the highest quality.

● **Municipal Applications:** Municipalities can rely on **SCIFLOC™** for effective water purification, safeguarding public health.

● **Agricultural Needs:** Farmers and agricultural operations benefit from **SCIFLOC™**'s capability to remove impurities from water sources used for irrigation and livestock.

No matter your application, **SCIFLOC™** is adaptable, efficient, and effective.



SCIFLOC™: A Multitude of Diverse Applications.

Industrial Water Treatment

Elevate Your Manufacturing Processes

Industries are the backbone of our modern world, and they rely on a consistent and efficient supply of water for various manufacturing and production processes. The quality of this water directly impacts the efficiency of these processes and the final product's quality. This is where **SCIFLOC™** steps in as a trusted partner for industrial water treatment.

Optimising Water Quality: **SCIFLOC™** is designed for the rigorous demands of industrial applications.

Efficiency and Reliability: **SCIFLOC™** minimises downtime by removing impurities and sediments, allowing machinery to operate at its full potential.



For Demanding Industrial Applications, Trust in **SCIFLOC™**.

Agricultural Water Treatment

Nourishing Crops and Livestock

In the realm of agriculture, water quality is paramount for nourishing crops and livestock. **SCIFLOC™** is your dedicated partner in agricultural water treatment. Our specialised formula targets, reduces and removes impurities, providing your crops with cleaner water they need for robust growth. In addition, when manufacturers protocols are followed it ensures the health and well-being of your livestock by delivering water free from contaminants. With **SCIFLOC™**, you're choosing a comprehensive solution that supports agricultural success and sustainability.



SCIFLOC™: Boosting Crop Yields and Livestock Health.

Municipal Water Treatment

Safeguarding Public Health

Municipalities face multifaceted challenges in ensuring clean and safe water for their residents. **SCIFLOC™** steps in as a reliable solution to tackle these hurdles. In the realm of municipal water treatment, **SCIFLOC™** :

- **Removes Contaminants:** Our advanced formula is designed to remove impurities, suspended particles, dissolved solids, debris, and organic contaminants, significantly improving water quality.
- **Supports Reuse:** **SCIFLOC™** enables municipalities to treat water for reuse in specific applications, promoting resource conservation and sustainability.
- **Protects the Environment:** Before discharging water back into nature or the ocean, **SCIFLOC™** aids in treating it, mitigating the potential environmental impact.

Addressing Complex Challenges with **SCIFLOC™**.

Other Applications for SCIFLOC™



Mining and Mineral Processing

The mining industry often deals with contaminated water due to the extraction and processing of minerals. **SCIFLOC™** can assist in removing impurities and contaminants from mining wastewater, improving environmental compliance and sustainability.



Power Generation

Power plants, including thermal and nuclear facilities, use large amounts of water for cooling and other processes. **SCIFLOC™** can assist in treating cooling water and ensuring compliance with discharge regulations and is also capable of reducing biofilm built up in pipes.



Oil and Gas

The oil and gas sector generates large volumes of wastewater containing organic matter, hydrocarbons, and heavy metals. **SCIFLOC™** can help treat this wastewater, reducing environmental impact and ensuring compliance with regulations, including the reduction of benzenes.



Construction

Construction sites often generate runoff water containing sediment and construction related pollutants. **SCIFLOC™** can help mitigate erosion and sedimentation issues, improving water quality in construction areas.



Textile and Leather

Textile and leather manufacturing processes produce wastewater containing dyes and chemicals. **SCIFLOC™** can aid in the removal of colorants and contaminants, minimising environmental impact.



Hospitality

Hotels, resorts, and restaurants require high-quality water for guest amenities, such as swimming pools and spas. **SCIFLOC™** can contribute to water clarity.



Pulp and Paper

The pulp and paper industry generates wastewater with high levels of organic matter. **SCIFLOC™** can aid in the treatment of pulp and paper mill effluents, reducing environmental impact.

Simple Application.

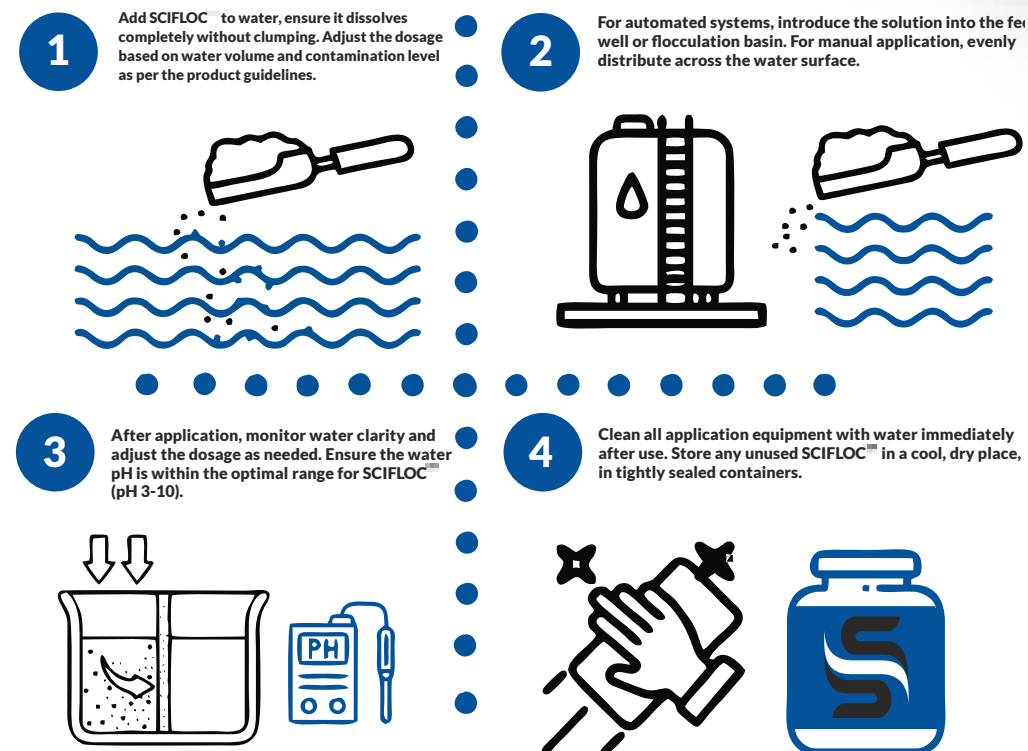
The following dosage levels are provided as general guidelines to help you get started. For recommended or specific dosages tailored to your needs, we recommend consulting directly with the manufacturer to ensure optimal results.

- **Very low soiling:** 0.05 grams per litre of water
- **Low soiling:** 0.25 grams per litre of water
- **Medium soiling:** 0.5 grams per litre of water
- **High soiling:** 1.0 gram per litre of water

Preparation and Mixing: To begin, slowly add **SCIFLOC™** to water while stirring continuously. This ensures the product dissolves completely, without clumping. The dosage should be adjusted based on the volume of water and the contamination level, following the product guidelines.

Application: For automated systems, introduce the prepared solution directly into the feed well or flocculation basin. For manual applications, evenly distribute the solution across the water surface for consistent results.

Monitoring and Adjustment: Once **SCIFLOC™** has been applied, monitor the water clarity and make dosage adjustments as needed to achieve the desired outcome. Be sure that the water pH remains within the optimal range of pH 3-10 for **SCIFLOC™** to perform effectively.



Efficiency & Cost Savings

Smart Choices for A Brighter Future

In the pursuit of a brighter and more sustainable future, making smart choices is paramount. **SCIFLOC™** places efficiency and cost savings at the heart of its design, providing innovative solutions that yield a positive impact. Our commitment to minimising environmental impact is reflected in our product's capabilities. From its space-saving advantages as a compact powder concentrate to its complete solubility in water, **SCIFLOC™** empowers industries to streamline their processes while preserving valuable resources.

“Smart choices today lead to a brighter, cost-effective future.”

SCIFLOC™: Enhancing Efficiency and Cost-Effective Solutions.

Compliance & Quality

Striving for Excellence

At Scientific Sanitation Solutions, we are unwavering in our dedication to meeting the highest standards of quality and safety. **SCIFLOC™** is designed with regulatory compliance in mind, adhering to stringent safety and environmental regulations to provide you with peace of mind. Our product undergoes rigorous quality testing to ensure it consistently meets our high standards, and we are fully committed to your satisfaction and the success of your water treatment endeavours.

SCIFLOC™: Meeting the Highest of Standards.

Contact Us

Let's Discuss Your Water Treatment Needs Today

We are here to be your partner in achieving superior water treatment solutions. Don't hesitate to reach out to us for comprehensive information on how **SCIFLOC™** can revolutionise and elevate your water treatment processes. Whether you are in need of tailored solutions for municipal, industrial, agricultural, or other applications, our team is ready to provide you with the expertise and support required to meet your specific needs.

Contact us today and embark on a journey to enhance the quality and efficiency of your water treatment endeavours. Your success is our priority.

Get in Touch

General Enquiries: (+44) 0203 747 0599

Sales: (+44) 0203 747 0501

Visit Our Website: www.scisan.co.uk

Our Address: Scientific Sanitation Solutions Ltd.
Registered address. 139-143 Union Street,
Oldham, Lancashire, OL1 1TE.
UNITED KINGDOM



@ScisanUK

SCIFLOC™ THE ULTIMATE FLOCCULANT



**SCIENTIFIC
SANITATION
SOLUTIONS**